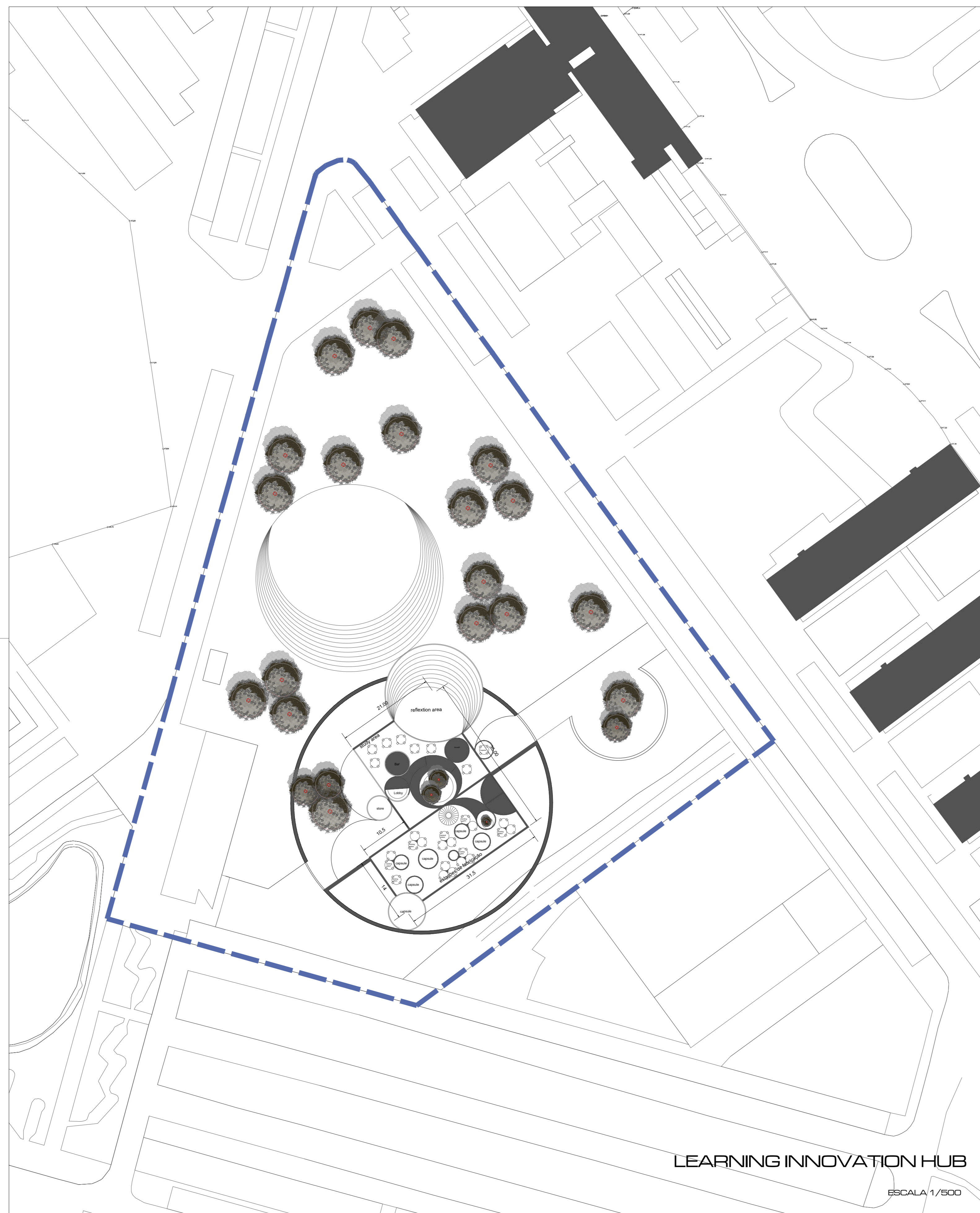


## LEARNING INNOVATION HUB



In order to create a space for introspection and work, urbanistically integrated with the already consolidated hub, a technological nucleus was developed based on simple shapes and formally aggregating the design of the existing building.

The building is made up of two distinct parts: a skin, which protects it; and a shell, that is the core. The outer skin has the function of insulating the building in order to increase the importance of research and experimentation, keeping away the surrounding distractions. The building itself represents the agglomeration of data that is shared.

It is an indefinite strategy, apparently marked out. The outer structure provokes the notions of inside and outside, introducing the notion of labyrinth, which is in part the representation of the illusion of movement.

The shapes of the project are largely based on the principles of Euclidean geometry, the circle being based on the most iconic building in the polytechnic complex: the library.

The outer circular boundary functions as an independent structure, which produces an interpretation of included or excluded meanings, as it is penetrable. The openings create new paths from the outside and open fields of vision from the inside, increasing transparency.

The outdoor space is intended to represent a large public terrace for contemplation and sharing, which embraces the main building, enveloping it. Its shapes are simple, just wooded, so as not to clash with the simplicity of the building, being just an agglutinating space.

The project was developed from the definition of three main spaces, corresponding to a consultation and research area, a large room for debate and exchange of ideas and a space for work and experimentation. Spaces can be used independently or together, as the spaces close or open according to the use given. In addition, they have a commercial space, restrooms and a bar. Although, space can be experienced in different ways and is open to the community, it is a place that poses more questions than answers, as the absolute limits and separations of spaces become fuzzy. It is this ambivalence that provokes the hybrid space.

Perfectly circular openings in ceilings and floors provide total visibility from the outside. In addition to being in cutouts of the glass space, they have dominant plant elements that allow passersby to perceive the surrounding spaces. This dynamic promotes close contact and exchange between the operational areas of research, continuing education and administration.

Building users perceive its full internal dimension, as opposed to the opaque outer casing that hides or conceals the interior. The apparently arbitrary configuration of circular openings determines the building's supports and allows the definition of its structure.

The use of spaces is fluid and natural, since all spaces are walkable.

The intervention aims to create movement within a static image, making it look like a living structure, introducing into the building a new understanding of space and contributing to a new understanding of its use, feeding new opportunities.



LEARNING INNOVATION HUB

PHASE

PRELIMINARY STUDY

VISEU POLYTECHNIC INSTITUTE

sheec: Proposal

authors: Filipe Carvalho de Almeida, Raquel Martins Almeida, Ubiana Rocha Martins, Andreia Pereira, Mafalda Amaral Rocha, Anqz.

FCA, I.ºe.º CA n.º 12071

1



Agosto, 2021



## LEARNING INNOVATION HUB

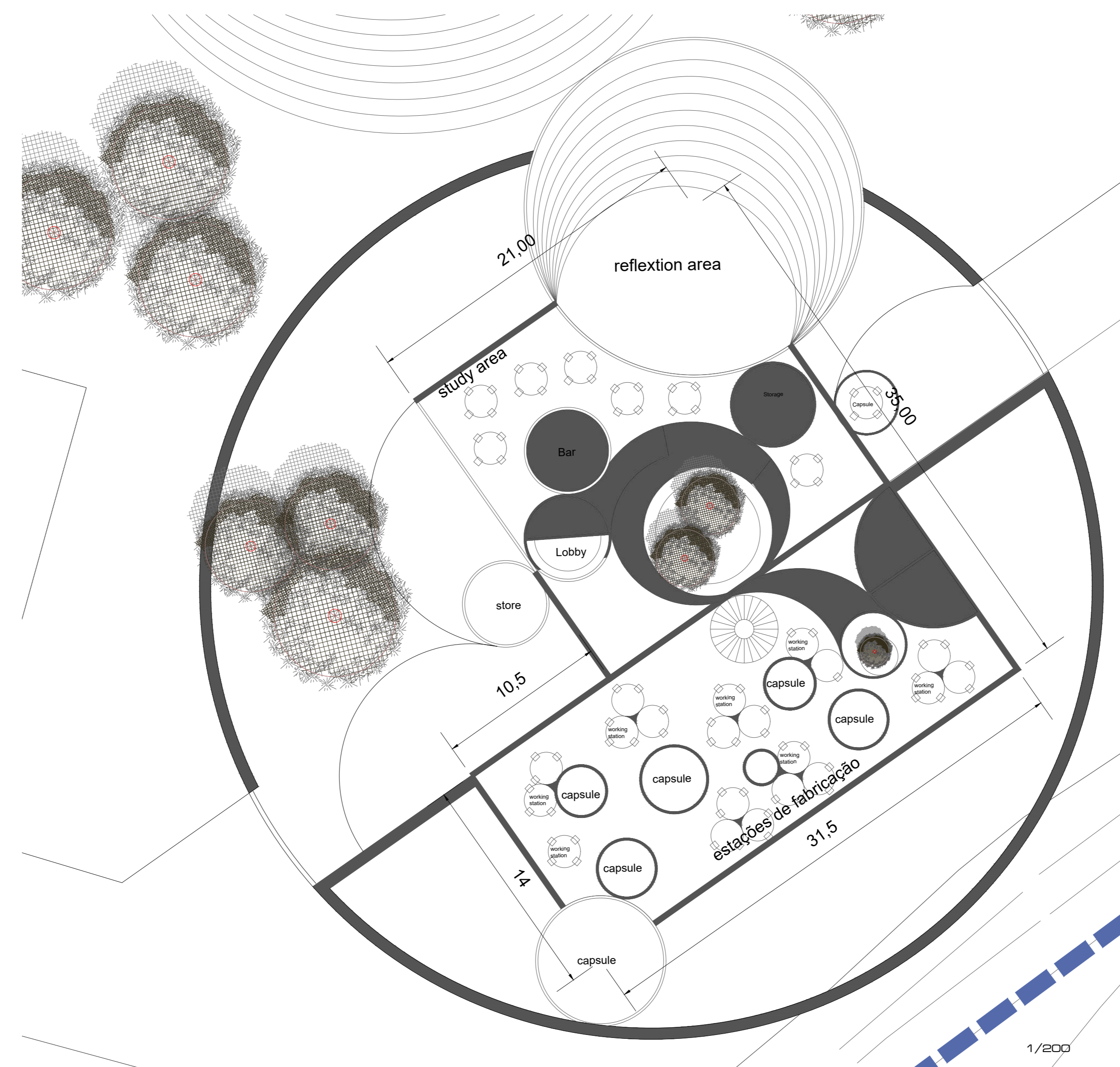
The entire space for experimental work and debate is visible not only through the existing fluid pathways, but also through ramps and stairs, which are informally distributed. It is therefore possible to have a broad view of the available areas and work dynamics.

The jobs are concentrated in the perspective of a closer and more flexible exchange of ideas. Next to each workstation core, small glazed capsules were created for jobs with a higher noise level. In this way, it is possible to integrate the experiences without harming the work developed.

As a dynamic space, all capsules can be opened and integrated into laboratories.

Total intervention area: 10 000m<sup>2</sup>

Total building area: 800m<sup>2</sup>



LEARNING INNOVATION HUB

PHASE

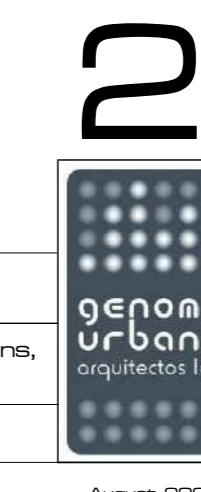
PRELIMINARY STUDY

VISEU POLYTECHNIC INSTITUTE

sheec: Proposol

authors: Filipe Carvalho de Almeida, Raquel Martins Almeida, Ubiana Rocha Martins, Andreia Pereira, Mafalda Amaral Rocha, Anq.

FCA, I.ºe OA n.º12071



Agosto, 2021